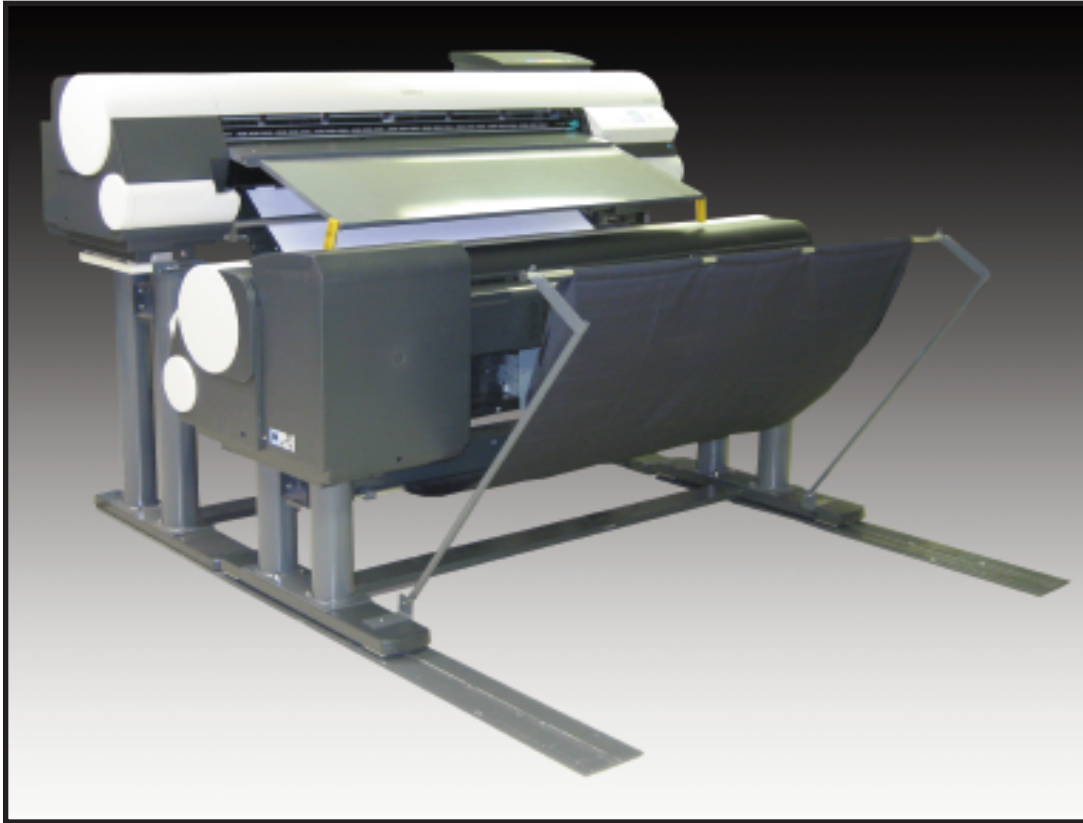


ImpoProof

BY HYPHEN



IMPOPROOF 810

Automated Double Sided Imposition Proofer

The ImpoProof line of Imposition Proofers are the fastest devices to use two printers. Utilizing two Canon iPF 810 1200 x 2400 DPI plotters, ImpoProof 810 gives the fastest double sided output available. Up to 26 backed up forms per hour at 1200 DPI. Faster output means faster ROI.

The unique camera registration system ensures that ImpoProof achieves an unmatched level of accuracy.

ImpoProof connects to all Prepress systems used in the industry today, including Prinergy, Rampage, Nexus, TrueFlow, PrintDrive, Harlequin, PrePage-it, Prinect, EskoGraphics and Brisque.

HYPHEN-

Fast, Accurate...Profit!

Fast, Accurate...Profit!

ImpoProof

BY HYPHEN

Technical Specifications

- Automatic double sided printing.
No operator intervention required.
- Camera registration system
achieves highest possible accuracy
- Up to 26 proofs per hour at 1200 dpi. More than
twice the speed of our nearest
competitor.
- Also available for the 44" & 60" iPF
8000S/9000S printers.

Printing Technology

2 - Canon iPF 810 Inkjet Printers
(ImpoProof 810)
2 - Canon iPF 810 Inkjet Printers
(ImpoProof 8000S)
2 - Canon iPF 9000S Inkjet Printers
(ImpoProof 9000S)

Resolution

1200 x 1200 dpi
1200 x 2400 dpi

Print Modes

Normal and Draft

Inks

330 ml and 700 ml ink cartridges
5 colors - C,M,Y,K and MBK

Interfaces

10/100 Ethernet Connection

Media Feed Type

Paper Rolls

Media Width

1118 mm (44")
1067 mm (42")
914 mm (36")*
*Must order Special Kit for 36"

Media Length

91 m (300')

Media Weights

Coated and Uncoated Papers from
14# to 24# are acceptable.

Input Formats

TIFF (1 Bit, 8 Bit, 24 Bit and 32 Bit), TIFF-IT, PS, PDF,
Delta, DCS, EPS

Electrical Requirements

100-120 VAC

Environment

Printing Range - 59° F to 95° F / RH 20% to 80%
Optimal Range - 72° F to 79° F / RH 30% to 60%

Dimensions

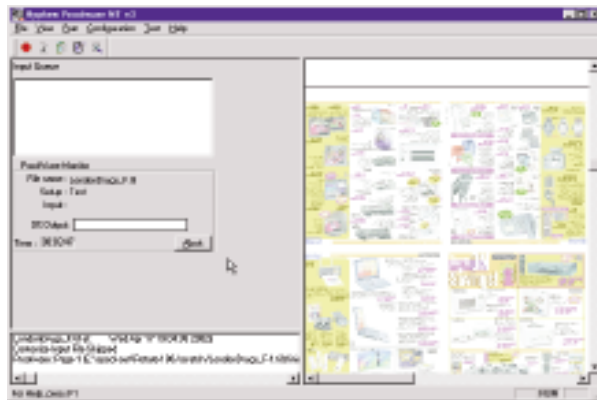
72" wide by 51" tall by 84" deep (+ computer)
Weight is approximately 450 lbs. assembled.
(ImpoProof 8000S)

96" wide by 51" tall by 84" deep (+ computer)
Weight is approximately 600 lbs. assembled.
(ImpoProof 9000S)

Other Requirements:

Windows XP Professional Computer
4 Port 10/100/1000 Hub

Computer specifications available at
www.flashlight-digital.com or your local
ImpoProof Dealer.



ImpoProof's proprietary ImageProcessor Module (above) accepts the widest range of file formats. The onscreen preview of your form is a standard feature, which can reduce costly errors. The ink reduction, color calibration and superior screening technology features are integral to producing the highest quality proofs.

Distributed by:

FLASHLIGHT
Digital

Phone: (800) 353-5546
johnm@flashlight-digital.com
www.impoproof.com

HYPHEN-