

# ImpoProof

BY HYPHEN



## IMPOPROOF 815

### Automated Double Sided Imposition Proofer

The ImpoProof has earned a reputation as the premier double-sided proofing solution in the world. The combination of Canon printer performance and a unique registration system has made the ImpoProof the industry leader in speed, quality, accuracy and reliability.

**It is fast.** You can achieve a top-end speed of 26 A1 proofs per hour at 1200 dpi.

**It is accurate.** The time-tested camera registration system has made the ImpoProof, without question, the industry leader in repeatability with a +/-1MM registration tolerance.

**It is profitable.** As a fully-automated solution, ImpoProof achieves an unmatched level of efficiency with the least amount of operator involvement. And the combination of Canon's superior ink yield and a cost-effective list of certified papers guarantee the industry's lowest cost per double-sided proof.

**HYPHEN-**

Fast, Accurate...Profit!

Fast, Accurate...Profit!

# ImpoProof

BY HYPHEN

## Technical Specifications

- Automatic double sided printing. No operator intervention required.
- Camera registration system achieves highest possible accuracy
- Up to 26 proofs per hour at 1200 dpi. More than twice the speed of our nearest competitor.
- Also available for the 44" & 60" iPF 8000S/9000S printers.

### Printing Technology

2 - Canon iPF 815 Inkjet Printers  
**(ImpoProof 815)**  
2 - Canon iPF 8000S Inkjet Printers  
**(ImpoProof 8000S)**  
2 - Canon iPF 9000S Inkjet Printers  
**(ImpoProof 9000S)**

### Resolution

1200 x 1200 dpi  
1200 x 2400 dpi

### Print Modes

Normal and Draft

### Inks

330 ml and 700 ml ink cartridges  
5 colors - C,M,Y,K and MBK

### Interfaces

10/100 Ethernet Connection

### Media Feed Type

Paper Rolls

### Common Media Widths

1118 mm (44") Maximum  
1067 mm (42")  
914 mm (36")\* Minimum  
\*Must order Special Kit for 36" - No add'l charge

### Media Length

91 m (300')

### Media Weights

Coated and Uncoated Papers from  
14# to 24# are acceptable.

### Input Formats

Can be connected to all known PrePress Workflows.

### Electrical Requirements

100-120 VAC

### Environment

Printing Range - 59° F to 95° F / RH 20% to 80%

Optimal Range - 72° F to 79° F / RH 30% to 60%

### Dimensions

72" wide by 51" tall by 84" deep (+ computer)

Weight is approximately 450 lbs. assembled.

**(ImpoProof 815 & 8000S)**

96" wide by 51" tall by 84" deep (+ computer)

Weight is approximately 600 lbs. assembled.

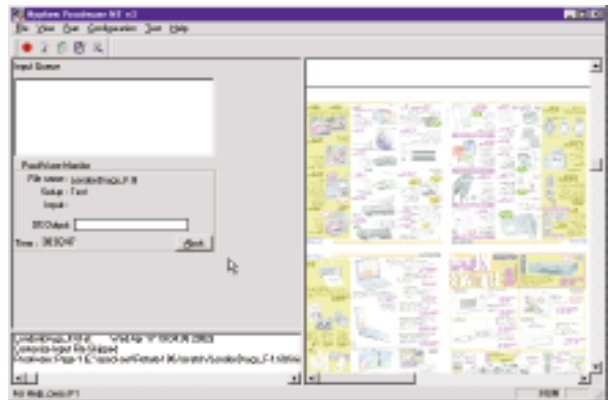
**(ImpoProof 9000S)**

### Other Requirements:

Windows XP Professional Computer

5 Port 10/100/1000 Hub

Computer specifications available at  
[www.flashlight-digital.com](http://www.flashlight-digital.com) or your local  
ImpoProof Dealer.



ImpoProof's proprietary ImageProcessor Module (above) accepts the widest range of file formats. The onscreen preview of your form is a standard feature, which can reduce costly errors. The ink reduction, color calibration and superior screening technology features are integral to producing the highest quality proofs.

Distributed by:

**FLASHLIGHT**  
**Digital**

Phone: (800) 353-5546  
[johnm@flashlight-digital.com](mailto:johnm@flashlight-digital.com)  
[www.impoproof.com](http://www.impoproof.com)

**HYPHEN-**