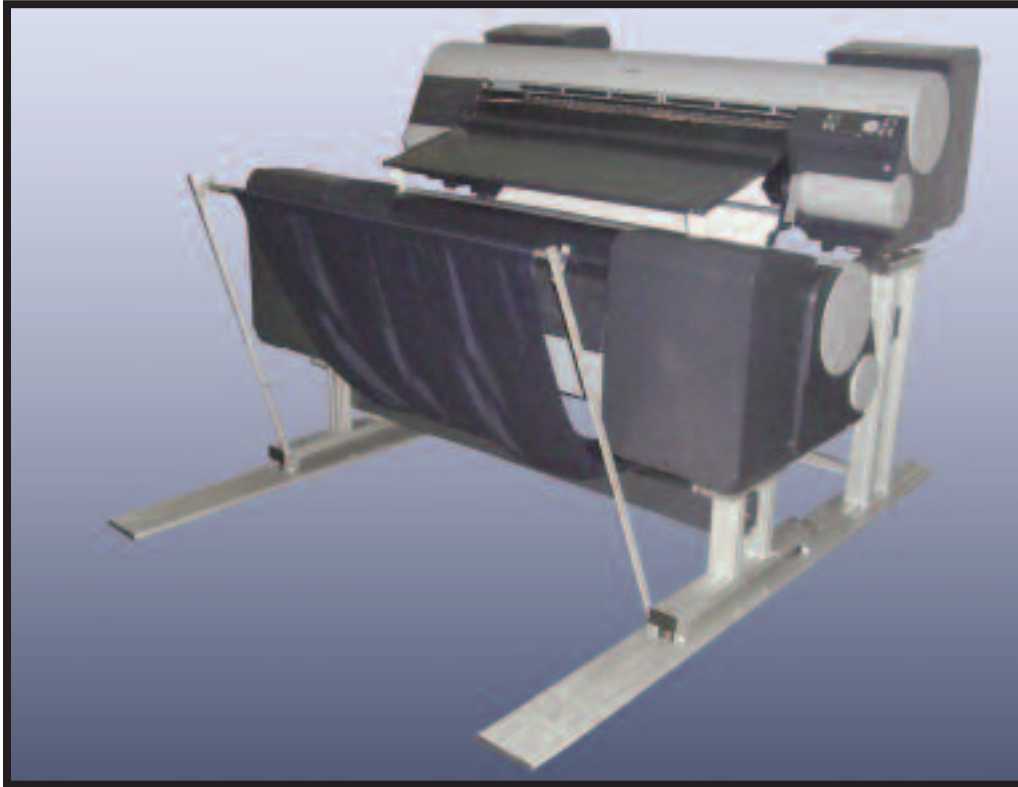


ImpoProof

BY HYPHEN



IMPOPROOF 8300S

Automated Double Sided Imposition Proofer

The ImpoProof has earned a reputation as the premier double-sided proofing solution in the world. The combination of Canon printer performance and a unique registration system has made the ImpoProof the industry leader in speed, quality, accuracy and reliability.

It is fast. You can achieve a top-end speed of 23 A1 proofs per hour at 1200 dpi.

It is accurate. The time-tested camera registration system has made the ImpoProof, without question, the industry leader in repeatability with a +/-1MM registration tolerance.

It is profitable. As a fully-automated solution, ImpoProof achieves an unmatched level of efficiency with the least amount of operator involvement. And the combination of Canon's superior ink yield and a cost-effective list of certified papers guarantee the industry's lowest cost per double-sided proof.

HYPHEN-

Fast, Accurate...Profit!

Fast, Accurate...Profit!

ImpoProof

BY HYPHEN

Technical Specifications

- Automatic double sided printing.
No operator intervention required.
- Camera registration system
achieves highest possible accuracy
- Up to 23 proofs per hour at 1200 dpi. More than
twice the speed of our nearest
competitor.
- Also available for the 44" iPF815, iPF8000S &
60" iPF 9000S printers.

Printing Technology

2 - Canon iPF 8300S Inkjet Printers
(**ImpoProof 8300S**)
2 - Canon iPF 8000S Inkjet Printers
(**ImpoProof 8000S**)
2 - Canon iPF 9000S Inkjet Printers
(**ImpoProof 9000S**)
2 - Canon iPF 815 Inkjet Printers
(**ImpoProof 815**)

Resolution

1200 x 1200 dpi
1200 x 2400 dpi

Print Modes

Draft, Normal and High Quality

Inks

330 ml and 700 ml ink cartridges
8 colors - C,M,Y,K,PM,PC,GY and MBK

Interfaces

10/100 Ethernet Connection

Media Feed Type

Paper Rolls

Media Width

1118 mm (44") Maximum
1067 mm (42")
914 mm (36")* Minimum
*Must order Special Kit for 36" - No add'l charge

Media Length

91 m (300')

Media Weights

Coated and Uncoated Papers from
14# to 24# are acceptable.

Input Formats

Can be connected to all known PrePress Workflows.

Electrical Requirements

100-120 VAC

Environment

Printing Range - 59° F to 95° F / RH 20% to 80%
Optimal Range - 72° F to 79° F / RH 30% to 60%

Dimensions

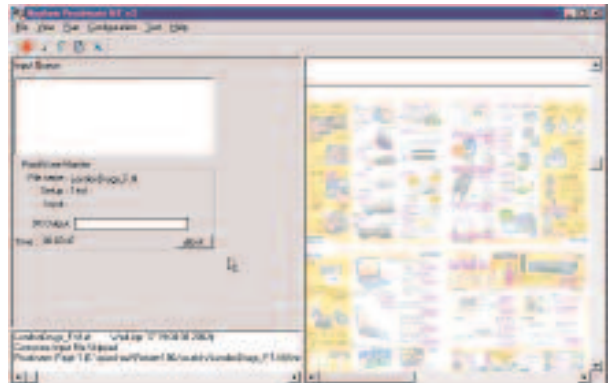
72" wide by 51" tall by 84" deep (+ computer)
Weight is approximately 450 lbs. assembled.
(**ImpoProof 8300S, 8000S & 815**)

96" wide by 51" tall by 84" deep (+ computer)
Weight is approximately 600 lbs. assembled.
(**ImpoProof 9000S**)

Other Requirements:

Windows XP Professional Computer

Computer specifications available at
www.flashlight-digital.com or your local
ImpoProof Dealer.



ImpoProof's proprietary ImageProcessor Module (above) accepts the widest range of file formats. The onscreen preview of your form is a standard feature, which can reduce costly errors. The ink reduction, color calibration and superior screening technology features are integral to producing the highest quality proofs.

Distributed by:

FLASHLIGHT
Digital

Phone: (800) 353-5546
johnm@flashlight-digital.com
www.impoproof.com

HYPHEN-