

# *ImpoProof*

BY HYPHEN



## **IMPOPROOF 8000**

### **Automated double sided imposition proofer**

The ImpoProofx2 line of Imposition Proofers are the only devices to use two printers. Utilizing two Canon iPF8000 1200x2400 DPI plotters, ImpoProof 8000 gives the fastest double sided output available. Up to 20 backed up forms per hour at 1200x1200 DPI, Faster output means faster ROI.

The unique camera registration system ensures that ImpoProof achieves an unmatched level of accuracy.

ImpoProof connects to all PrePress systems used in the industry today, including KodakCreoScitex, Rampage, Nexus, Screen, Agfa, Harlequin, PrePacelt, Heidelberg, EskoGraphics, EscherGrad, BasysPrint and Luscher.

*Fast, Accurate...Profit!*

# ImpoProof

BY HYPHEN

## Technical Specifications

- Automatic double sided printing. No operator intervention required. (**ImpoProof 8000**)
- Camera registration system achieves highest possible accuracy
- Up to 20 proofs per hour at 1200 dpi. More than twice the speed of our nearest competitor. (**ImpoProof 8000**)

### Printing Technology

2 - Canon iPF8000 Inkjet Printers (**ImpoProof 8000**)

### Resolution

1200x1200 dpi  
1200x2400 dpi

### Print Modes

Best, Normal and Draft

### Inks

330 ml ink cartridges  
700 ml Cartridges  
12 colors - C,PC,M,LP,Y,K,G,PG (R,G,B &MB not used)

### Interfaces

10/100 Ethernet Connection, USB2.

### Media Feed Type

Paper Rolls

### Media Width

914 mm (36") to 1117mm (44")

### Media Length

91 m (300')

### Media Weights

Coated and Uncoated Papers from 14# to 24# are acceptable.

### Input Formats

TIFF (1 Bit, 8 Bit, 24 Bit and 32 Bit), TIFF-IT, PS, PDF, Delta, DCS, EPS ,RTL

### Electrical Requirements

100-120 VAC

### Environment

Printing Range - 59° F to 95° F / RH 20% to 80%  
Optimal Range - 72° F to 79° F / RH 30% to 60%

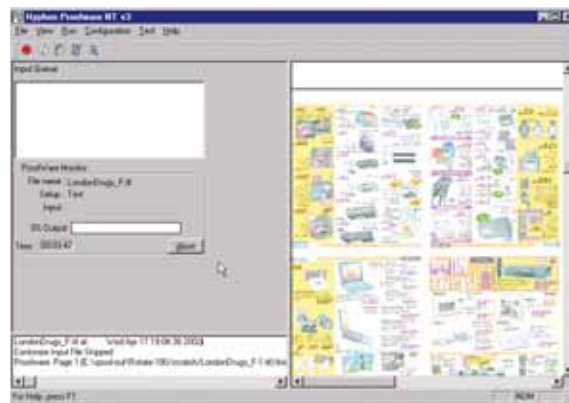
### Dimensions

72" wide by 52" tall by 96" deep  
Weight is approximately 800 lbs. assembled. (**ImpoProof 8000**)

### Other Requirements:

Windows XP Professional Computer

Computer specifications available at [www.flashlight-digital.com](http://www.flashlight-digital.com) or your local ImpoProof Dealer.



ImpoProof's proprietary ImageProcessor Module (above) accepts the widest range of file formats. The onscreen preview of your form is a standard feature, which can reduce costly errors. The ink reduction, color calibration and superior screening technology features are integral to producing the highest quality proofs.

Distributed by:



Phone: (800) 353-5546  
[sales@flashlight-digital.com](mailto:sales@flashlight-digital.com)  
[www.flashlight-digital.com](http://www.flashlight-digital.com)

Fast, Accurate...Profit!